

Since 2012

**NetFruX**  
TECHNOLOGIES

# **BUSINESS PROFILE**

---

"Your Partner in Next-Gen Digital Triumph"

An ISO/IEC 20000-1:2018 Certified Company

Google Partners

# CONTENT

---

- 1 About Us
- 2 Core Values
- 3 Our Story
- 3 D4 Methodology
- 5 Services
- 6 Industries Served
- 7 Leadership
- 8 Clientele
- 9 Countries We Serve
- 10 Certifications & Partners
- 11 NetFruX Team
- 12 Contact Us

# ABOUT US

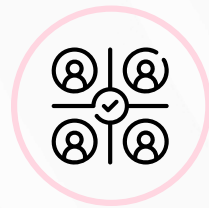
At **NetFruX Technologies**, we drive digital innovation with a global footprint in the USA and India. Since 2012, we've been transforming businesses in education, healthcare, service, clothing & merchandising, real estate, corporate, and e-commerce. Our expertise spans Website Design & Development, E-Commerce, AI, Web3, Blockchain, Mobile Apps, and Digital Marketing. Partner with us for cutting-edge solutions and a futuristic approach to technology. Let's shape the future together!



COLLABORATION

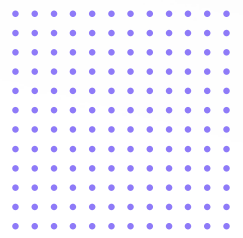


COOPERATION



CONSENSUS

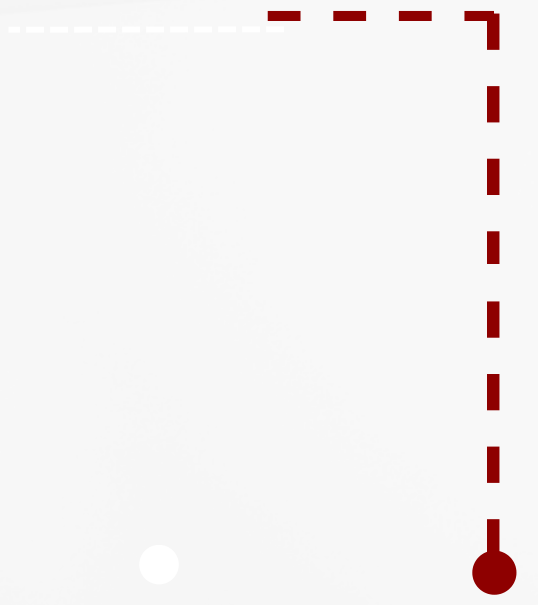
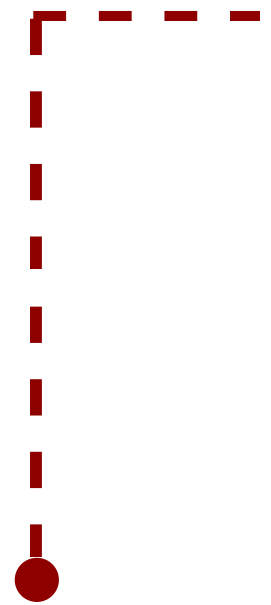




# CORE VALUES



Our guiding ethos is reflected in the fundamental beliefs that our core values embody.



## Mobility

UNITY EMPOWERS US: ITS'S OUR GREATEST STRENGTH IN EVERY ENDEVOUR.



## LIMITLESS

LIMITLESS PASSION DRIVES OUR PROGRAMMING TO UNPARALLELED HEIGHTS



## VERSATILITY

OUR EAGERNESS TO LEARN IS A SIGNIFICANT ADVANTAGE WE POSSESS.



## CULTURE

CULTIVATING A SERVICE-CENTERED CULTURE IS PARAMOUNT.



## RESPONSIBILITY

WE TAKE COMPLETE RESPONSIBILITY FOR OUR ACTIONS WITHOUT HESITATION.



## TRUST

FUNDAMENTAL TO US, STRENGTHENS RELATIONSHIPS WITH CLIENTS, PARTNERS. ASSOCIATES.



## INTEGRITY

CORNERSTONE OF OUR VALUES. GUIDING EVERY DECISION & ACTION WE TAKE.



# OUR STORY



## Trust

OUR INAUGURAL ASSOCIATE AND CLIENT, BOTH ACQUIRED IN 2012, REMAIN WITH US.

## Leadership

AVERAGE 15+ YEARS OF INDUSTRY EXPERIENCE

## Clients

65% OF OUR CLIENTS CHOOSE TO CONTINUE WORKING WITH US BECAUSE OF OUR QUALITY, TIMELY DELIVERY, AND RELIABLE AVAILABILITY

## Infrastructure

OUR OFFICE SPANS 3,400 SQ. FT

## Exposure

CLIENTS FROM 20+ COUNTRIES

## Delivery

850+ PROJECTS DELIVERED

## Team

95+ SKILLED AND EXPERIENCED TEAM MEMBERS



# D4 METHODOLOGY

---



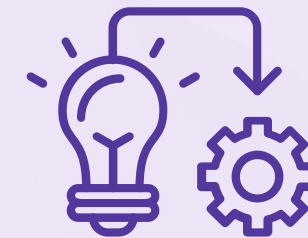
## D1 - Define

Our team collaborates with you to establish the project's nature and scope long before any code is written or a course of action is chosen.



## D2 - Design

A clear and understandable design overview that showcases the whole capability of a new system is produced once a thorough understanding of the requirements is obtained.



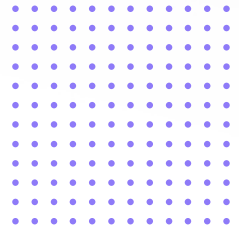
## D3 - Develop

When a project starts to come to life, that's an exciting time! Code is expertly written, carefully documented, and thoroughly tested using unique procedures, tools, and tried-and-true methods.



## D4 - Deploy

We perform the last step and install new software on your system, whether it is on-premises or in the cloud, after completing all development objectives. We offer both practical training and data transfer services.



# SERVICES

WE MOVE FAST, ITERATE QUICKLY AND SHIP CONSTANTLY



## Mobile App

Our expertise lies in creating business-oriented mobile applications that help companies take advantage of mobile technologies. Our products give businesses the ability to increase productivity. Increase workflows and successfully interact with clients on mobile platforms.

## Website

Our specialty is assisting businesses in building business web portals. We provide comprehensive solutions that help companies boost output, encourage collaboration, and streamline internal and external processes.



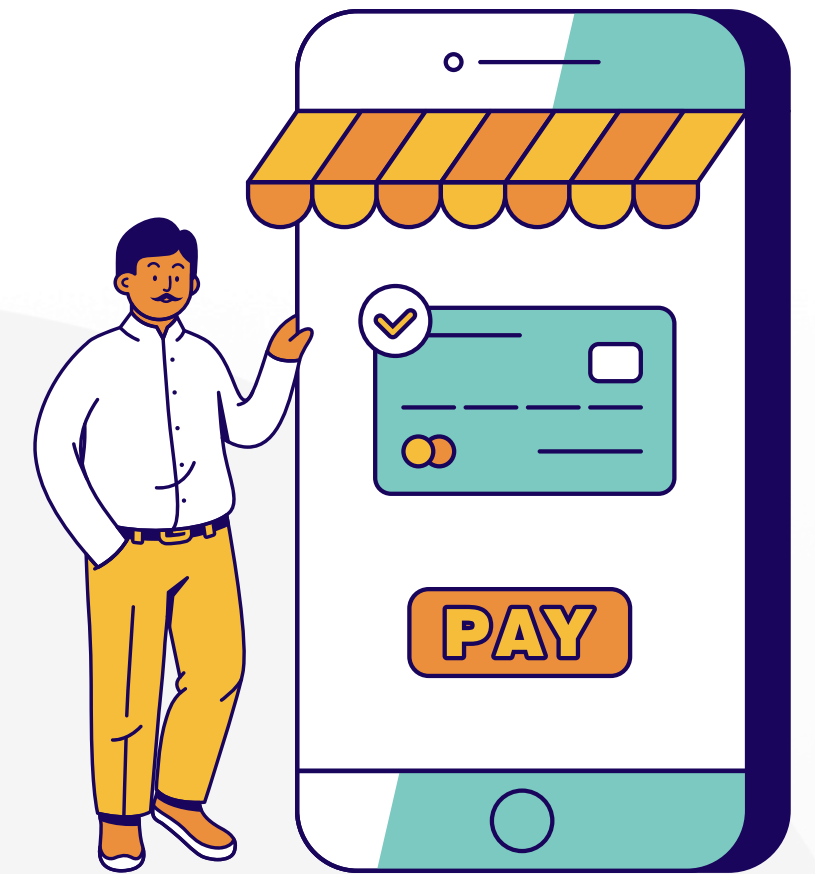
## Marketing

In addition to providing effortless integration with basic components including Bluetooth Low Energy (BLE) devices, printers, RFID, Internet of Things (IoT), and radio frequency identification (RFID), we concentrate on offering end-to-end solutions that involve numerous elements.

# INDUSTRIES SERVICES

## RETAIL & E-COMMERCE

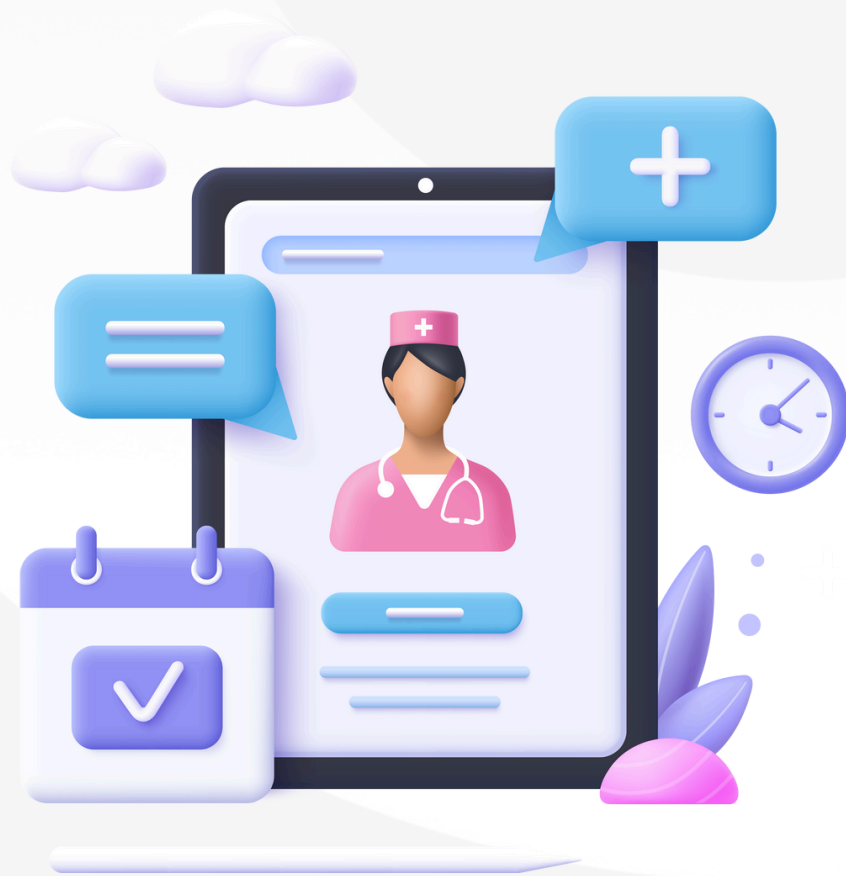
Our history of creating outstanding mobile applications and online portals is evidence of our depth of knowledge and expertise in the retail and e-commerce industries. Our productive collaborations with valued customers like Panasonic and RCM serve as proof of this.



# INDUSTRIES SERVICES

## HEALTHCARE & WELLNESS

The complexity of our experience in creating cutting-edge healthcare solutions reflects our dedication to improving patient care and prevention. We are working toward simplifying medical care and enhancing overall health outcomes, as seen by our capacity to provide customized applications and platforms.



# INDUSTRIES SERVICES



## REAL ESTATE & PROPERTY MGMT

Our wealth of experience in creating cutting-edge solutions for the property management and real estate industries demonstrates our skill and dedication to quality. We have created specific structures that boost client happiness and real estate operations through smart partnerships.

## TRAVEL & HOSPITALITY

We have a wealth of experience in the travel and hospitality sectors and have an excellent record of creating seamless apps. Our successes as a team show that we can design compelling user experiences that improve client journeys and spur company expansion.

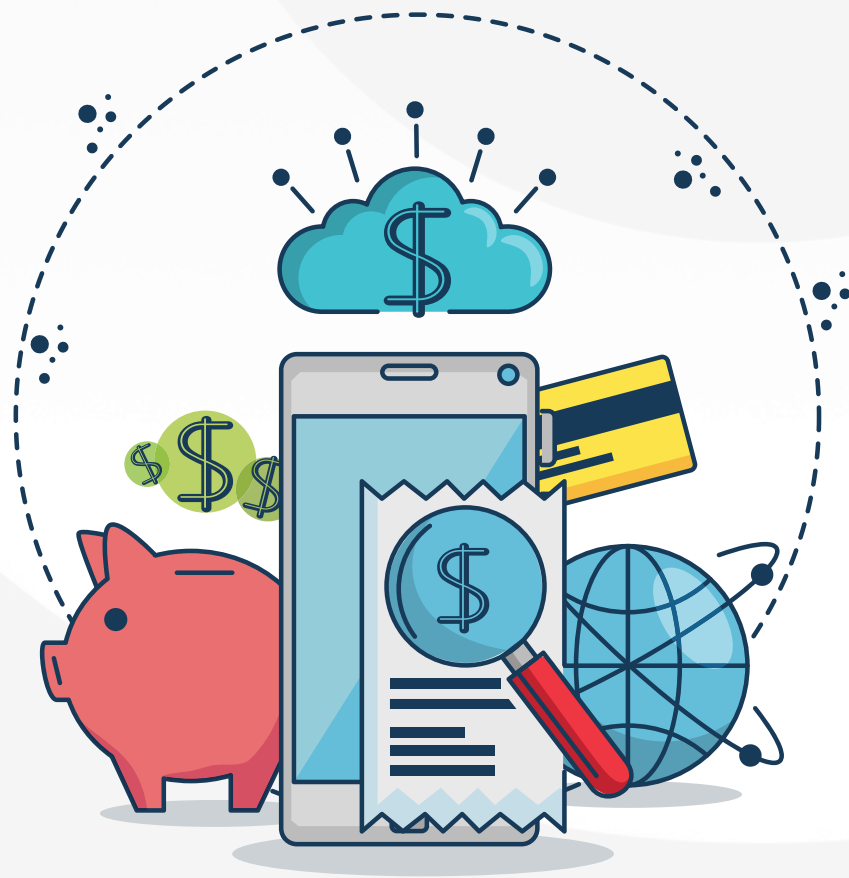


**NetFruX**  
TECHNOLOGIES

# INDUSTRIES SERVICES

## FINTECH & EDTECH

Our proficiency in the Fintech and Edtech industries is shown by our extensive work in creating modern financial technology and educational platforms. Our achievements working together with a range of clients demonstrate our dedication to providing meaningful solutions that improve user engagement and expedite procedures.



# INDUSTRIES SERVICES

## CYBERSECURITY & SMART MANUFACTURING

We believe in securing digital infrastructures, as evidenced by our broad experience in cybersecurity solutions for smart manufacturing. Assuring our partners' systems' resilience against new threats and maximizing operational efficiency, we have collaborated with several industry giants with success. This proficiency is a result of our commitment to developing the manufacturing industry's use of technology and security.



## AUTOMOBILE & ACCESSORIES

We create streamlined platforms and apps that improve user experiences by utilizing our wealth of knowledge in the automobile and accessory industries. Strong industry knowledge and a dedication to quality are demonstrated by our fruitful collaborations with top brands.



# INDUSTRIES SERVICES

## AI/ML, CRYPTO

Our knowledge of AI/ML and cryptocurrency appears by our extensive expertise in creating creative solutions. In these fast-paced industries, we use state-of-the-art technologies to increase productivity and open up new doors while providing our clients with outstanding outcomes.



## LOGISTICS

We are committed to simplifying supply chain processes, as demonstrated by our vast experience in creating reliable logistics solutions. Smooth movement of goods from point of origin to point of destination is ensured by the partnerships we have successfully formed with a number of clients to improve their inventory management, warehousing, and transportation operations.



# SERVICES

Website Designing & Development

E-Commerce

Product Development

AI, Web3, Automation

Blockchain and Crypto

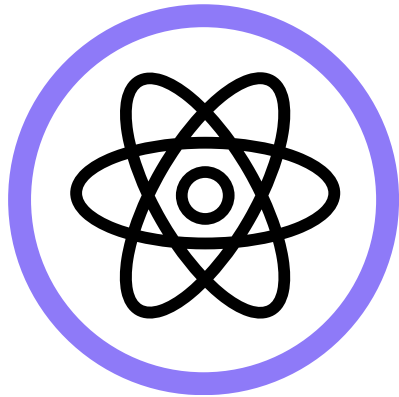
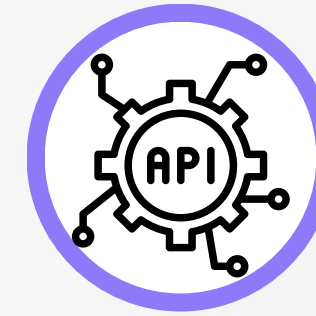
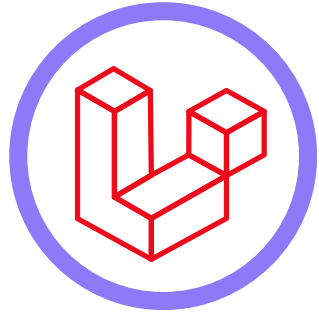
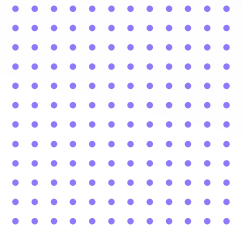
Mobile App Development

Digital Marketing

SEO – Search Engine Marketing

Local SEO and Marketing

Google Ads, Facebook & IG Ads



# LEADERSHIP

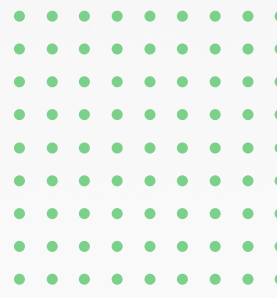
---



**Satwinder Singh**  
*Co-Founder & CEO*



**Sudhanshu Kashyap**  
*Co-Founder & CTO*



**KMSchool** FixIce.com

# CLIENTELE



**MMA ADVOCATES**  
Purpose Beyond Law

**WHITBY**  
EYE CARE  
.com

**Siegel JCC**  
Delaware

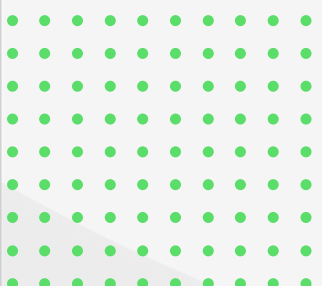
*Konina*  
HARMONY

**Floret**  
Boutique

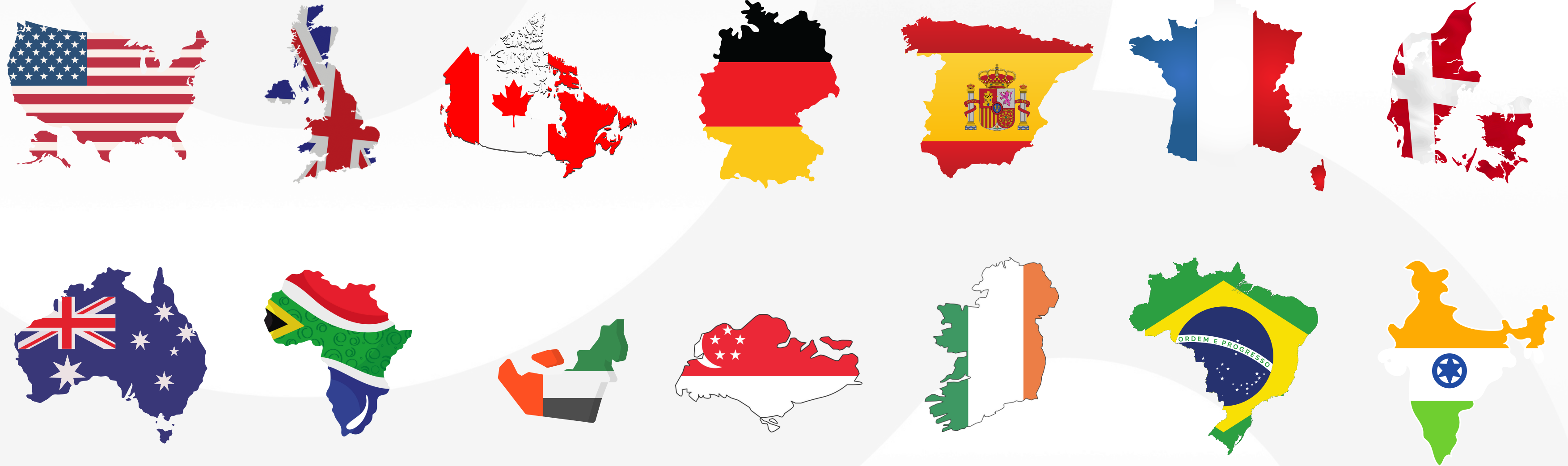
**ALIEN**  
SYSTEM



**NetFruX**  
TECHNOLOGIES



# COUNTRIES WE SERVE



AND MORE..

# CERTIFICATIONS & PARTNERS

**NASSCOM<sup>®</sup>**  
**CERTIFICATE**



 **shopify** partners

**BIGCOMMERCE**  
CERTIFIED **PARTNER**



**NetFruX**  
TECHNOLOGIES

# NETFRUX TEAM

---



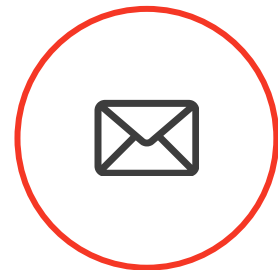
# OUR CONTACT

---



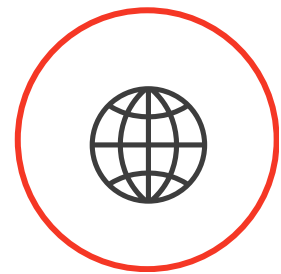
## Phone number

+91 941-726-1099  
+91 987-813-8684



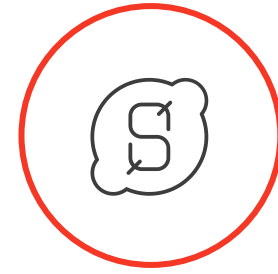
## Email

support@netfrux.com



## Website

netfrux.com



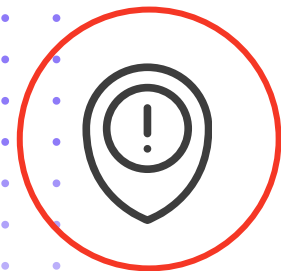
## Skype

netfrux



## Linkedin

<https://www.linkedin.com/company/netfrux-technologies>



## Location

NetFruX Technologies Plot No. F30, Phase 8, Industrial Area,  
Mohali, Punjab, India - 160071

